

# Christopher Beane & David Mitchell

## Photographs

January 19 - February 26, 2017

Opening Reception: Thursday, January 19, 6-8 pm

Jim Kempner Fine Art is pleased to present a two-person exhibition of color photographs by gallery artists Christopher Beane and David Mitchell. The show features 20 images from Christopher Beane's series *Portraits from a Ranunculus Room*, and new geometric abstract photographs printed on canvas by David Mitchell. The exhibition opens on January 19<sup>th</sup> and will remain on view through February 26<sup>th</sup>, 2017. An opening reception for the artists will be held on Thursday, January 19<sup>th</sup>, from 6-8 pm.

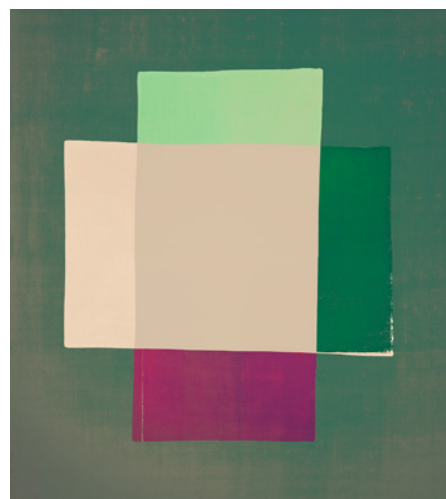


*Open and Loaded*, 2016.

Flex chromogenic print. 21 x 26". Unique.

Based in New York, American fine art photographer Christopher Beane is best known for his vibrant and inventive flower photographs. In 1998, Beane began to photograph individual ranunculus against a black background with a 5 x 5" analog sinar camera. He continued to photograph ranunculi, a genus of about 600 species in the ranunculaceae family, every year they were in season until 2010, amassing hundreds of portraits. Inspired by a room in Monet's home in Giverny, France featuring a collection of Japanese block prints, Beane outfitted his own eccentric salon with photographs of ranunculi. Beane's work has been shown at The Andy Warhol Museum, Pittsburgh, PA; the Museum der Moderne, Salzburg, Austria; and the Maison Européenne de la Photographie, Paris, France, and is in the collections of Beth Rudin DeWoody and Virginia Dwan. A monograph of the artist's work, entitled *Beane Flower*, was published in 2008.

David Mitchell is a British-born abstract photographer who lives in Thailand. In his recent large scale photographs, Mitchell continues his exploration of photographing collages made from a variety of materials such as fabric, plastic, paper, and tape, which are then digitally manipulated. The exhibition features two photographs from Mitchell's new *ABNC* series, which he has chosen to print on canvas. The use of canvas relates to the tactility of the original assemblage, bringing out the painterly feel of his work. Mitchell has had two solo exhibitions at Jim Kempner Fine Art. Lyle Rexer, the author of *The Edge of Vision: The Rise of Abstraction in Photography*, wrote the catalogue essay that accompanied his second show. His photographs are in private collections throughout the United States, Europe and Asia.



*ABNC 02* 2016.

Archival pigment print on canvas.  
58 x 52".

Both artists' work will be debuted at the highly-anticipated 37<sup>th</sup> edition of The Photography Show, presented by AIPAD. The Photography Show, which Jim Kempner Fine Art is participating in for the first time, will be held March 30<sup>th</sup>– April 2<sup>nd</sup>, 2017 at Pier 94.

For more information, please contact Dru Arstark at [dru@jimkempner.com](mailto:dru@jimkempner.com) or Sarah Bielicky at [sarah@jimkempner.com](mailto:sarah@jimkempner.com).

**Jim  
Kempner  
Fine  
Art**

501 West 23<sup>rd</sup> Street

New York, NY 10011

Tel: 212-206-6872

Email: [info@jimkempner.com](mailto:info@jimkempner.com)

[www.jimkempnerfineart.com](http://www.jimkempnerfineart.com)