

SHANLIN YE



Reflection #11, 2017.

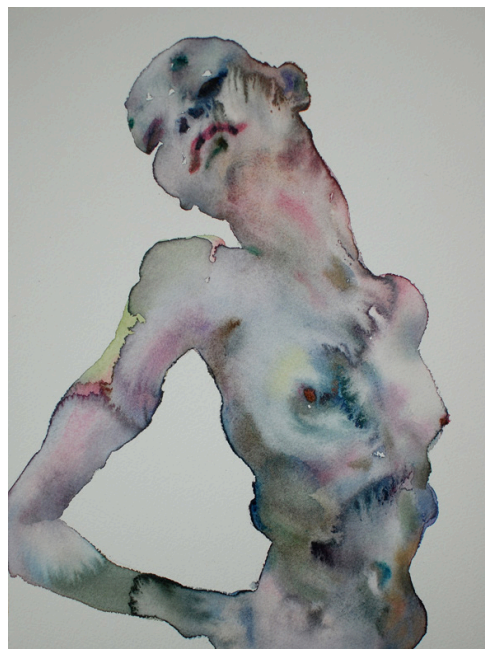


Figure #5, 2016.

Artist Statement

I grew up in China and received my education in China. I moved to the US in 2012 and blended into this country of immigrants. Still I feel quite lost from time to time. After a couple of years of living in the US, I came to feel lost when I visit China, too. Recently I have worked on paper with heads and figures to create the current show, Monologue. I am fascinated by the fluidity and ungoverned nature of watercolor. I enjoy watching the water and the color dancing on paper. It is like a poem. My work is not about realism or perfection; rather, they address the opposite: the coarse, imperfect and aberrant. I try to reveal the unseen part of human existence and human identification in my paintings. It is a spiritual communication when I paint a portrait, and I will be thrilled if you can find a way to “talk” to the persons you meet in this body of work.

Shanlin Ye, 2016

EDUCATION

- 2001 MFA, Tsinghua University Academy of Fine Arts, Beijing, China
1998 BFA, The Central Academy of Fine Art & Design, Beijing, China

PROFESSIONAL EXPERIENCE

- 2006-2016 *Works on Paper*, Beijing, China & St. Louis, MO
2001-2006 Beijing Institute of Fashion Technology, Full-Time Lecturer

SELECTED EXHIBITIONS

- 2017 *2017 International Juried Exhibition*, The Center for Contemporary Art, Bedminster, NJ
2017 Shanlin Ye & KAORUKO: *On the Verge*, Jim Kempner Fine Art, New York, NY
2016 *Monologue*, Jim Kempner Fine Art, New York, NY
2016 *Presence*, The Atrium Gallery, St. Louis, MO
2004 *Epochal Passion: Chinese Contemporary Oil Painting*, National Art Gallery of China World Hotel, Beijing, China
2001 *Best Works: Graduate Academy of Fine Arts and Design*, China's National Museum of Fine Arts, Beijing, China
2001 *New State*, Florence Art Gallery, Beijing, China
1999 *Fixed and Beyond*, Joint Exhibition at Wan Fung Art Gallery, Beijing, China
1996 *40th Ann. of the Central Academy of Fine Arts & Design*, China's National Museum of Fine Arts, Beijing, China